

Rules for red-crowned crane observation & photography

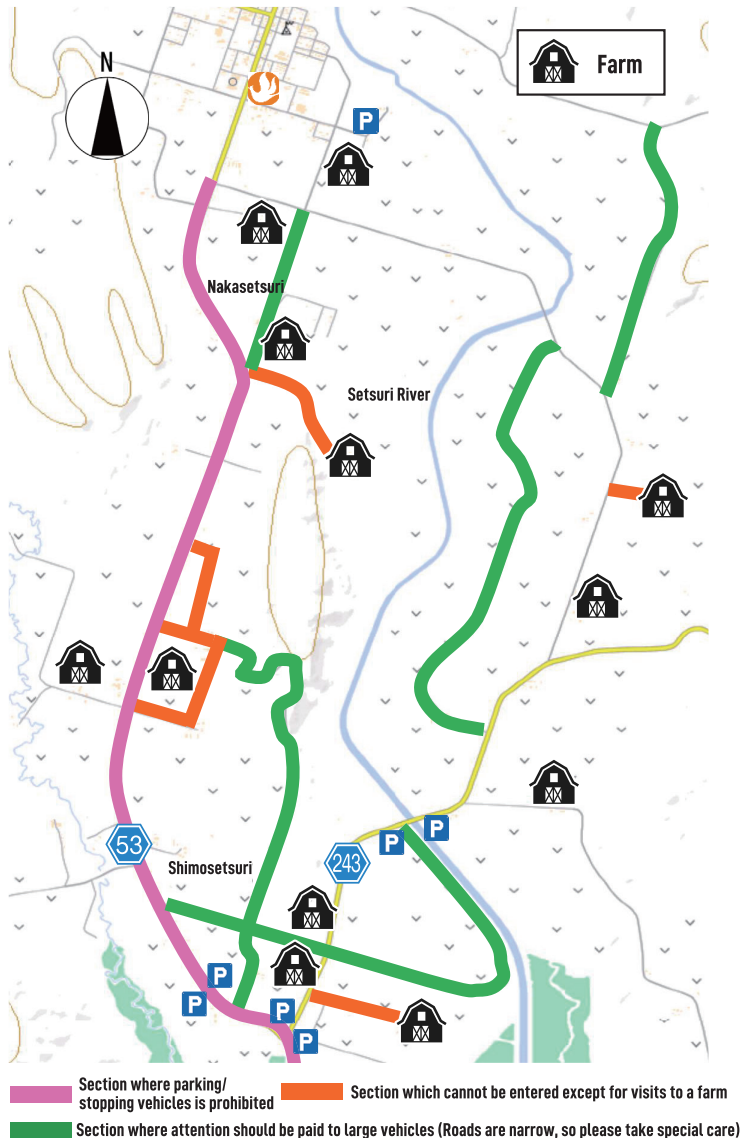
In order to care for the habitat of cranes and to ensure that both local residents and visitors can have a pleasant time



To those traveling by car

Since Tsurui Village is a dairy village, large work vehicles are driving around.

Please be kind to **give way to larger vehicles** in the village.



Cherish nature that nurtures red-crowned cranes



Do not litter trash



No idling while parked or stopped



No unauthorized logging and limbing

Self-centered observation and photography are prohibited



If a crane stands still with its head raised, it is an alert. Do not approach it any further!



No drones



Do not chase cranes



Do not do flash photography

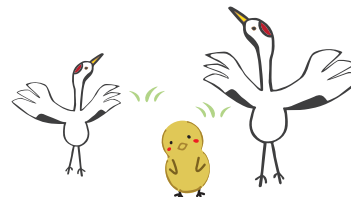


No private feeding



Do not shout or make loud noises

Keep a close eye on the nesting and brood-rearing cranes and leave them alone



Stay away



Do not disclose any information or photo from which the location can be identified



Observation and photography from the car



Consideration for local residents



Do not enter private land such as pastures and dent corn fields, as well as residential and farm grounds



There are zones where parking/stopping vehicles is prohibited



Do not observe private houses, or do not take photos including private houses



Give way to larger vehicles